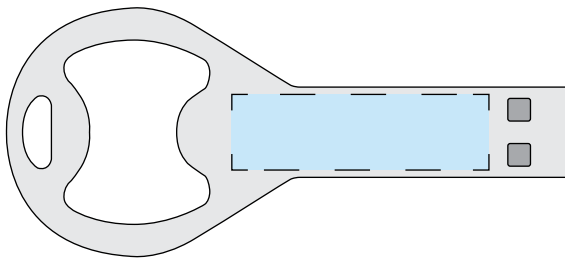


Artwork should be prepared in the following way:

- Supported file types: Vector .PDF .EPS .AI .SVG or high-res .JPEG or .PNG
- **Please note that if the printing of white ink is required, a vector artwork file must be provided.*
- All artwork should be set in CMYK colours (not RGB)
- .JPEG and .PNG files must be of high resolution (No lower than 300DPI)
- All fonts should be converted to vector outlines.
- Please clearly mark which is front and which is the back on your artwork.
- **Please note that failing to adhere to these guidelines may result in reduced print quality.**

Front



Product Dimensions: 74mm x 33mm x 4.5mm

Engraving Area: 34mm x 10mm (Both sides)

Back

